



FOCUS AT FIRST

Volume 24, Issue #8 A monthly publication of First Lutheran Church – Barron, WI August 2010

Heritage Service to be Offered July 31-August 1

A worship service remembering our heritage will be offered at First Lutheran on July 31-August 1, the weekend of the Barron 150th anniversary celebration. The order of service will reflect the Norwegian background of this congregation and will include parts of the service in Norwegian to give a flavor of the history. In addition, the hymns and the music will be of Norwegian background. Here at First Lutheran, we want to do our part for the community celebration. Spread the word. Invite others!

First Lutheran Hymn Sing on August 7-8

The weekend of August 7-8, will be your opportunity to sing to your heart's content as we will be offering a hymn sing during the gathering part of the worship. Come with your favorites from our Evangelical Lutheran Worship hymn book and request that the assembly sing them. Let's raise the roof or at least shake the rafters with the kind of hearty singing that First Lutheran is known for!

Service of Healing and Thanksgiving for Healing to be offered on August 14-15

You are invited to a communion service of healing and thanksgiving for healing on the weekend of August 14-15. Perhaps you are in a situation of desiring prayers for healing. Or perhaps you have experienced recovering from illness and you desire a prayer of thanksgiving. The laying on of hands and prayers for healing will be offered during receiving communion for prayers for thanksgiving for healing. The first healing service was offered June 5-6. The response was favorable so that the council decided at its June 21 meeting that this service should be offered at other times throughout the year as well.

“Lutheran Social Services Shared Ministry” on August 21-22

Lutheran Social Services is one of the most highly regarded social service agencies of any denomination. Come and hear about the shared ministry with Lutheran Social Services of Wisconsin and Upper Michigan as Kelly Jensen from LSS Church and Community Relations will give the message on August 22. She is energetic and passionate in sharing about this ministry. See the article on page 3 about “Who Is Lutheran Social Services?” and “Serving Society’s Needs.” Through LSS you touch the lives of others!

Confirmation Ministry begins with orientation and registration on August 31

Attention all confirmands and parents! Orientation and registration will be on Tuesday, August 31 at 5:00pm for 8th graders and parents, 5:30pm for 7th graders and parents, and 6:00pm for 6th graders and parents. The Second Wednesday Youth Group (SWYG) will be September 8 at 5:30-7:00pm, and the first day of classes will be September 15 at 4:00 and 6:00pm. The Rite of Confirmation for our 9th graders will be Sunday, October 3 at 10:45pm. The congregation is asked to pray for and support our confirmation ministry!

INSIDE	THIS ISSUE
Page 2	Message From Pastor Beyer
Page 4	Message From Pastor Bolstad
Page 5	Mission Kits
Page 13	Radio Ministry Reservation Forms



Lutheran Social Services of Wisconsin and Upper Michigan, Inc.

Dear Friends in Christ,

We thank God daily for the blessings we receive as members of the church of Jesus Christ. So many of those treasures come to us in our life together at First Lutheran. As members of First Lutheran Church we hear the good news of God's love weekly in our worship. We are claimed by God and strengthened for service in Holy Baptism and in Holy Communion. We are guided and inspired to live for Jesus as we participate in Bible studies and other learning experiences. We are encouraged to grow in our servant hood as we watch the example of the people around us. We enjoy the love and fellowship of so many "brothers" and "sisters" who befriend us and care for us in tough times.

In gratitude for the blessings we have received, we want to be a congregation that reaches out to the world around us, always sharing the blessings that have come to us from God. In that spirit our congregation determined at the January Annual Meeting to make 2010 a year in which we highlight our mission and ministry in the world.

We have challenged ourselves this year to contribute \$20,000 above what we have already committed to First Lutheran Church. With this needed money we will be equipped to do our congregational ministry and to reach out to the world with the love and concern God expects of us.

We have designated four weekends when we will receive a special offering. We have already highlighted the good we can accomplish through our partnership with Luther Park Bible Camp and the Northwest Synod of Wisconsin.

During the month of August, we will turn our attention to the important work we do through Lutheran Social Services. On Sunday, August 22, Kelly Jensen from Lutheran Social Services will be our guest speaker. She will remind us of what our partnership with Lutheran Social Services makes available for the community. We provide counseling, adoption and foster care, youth and family education, addiction help, older adult programs, and many other valuable services.

On the weekend of August 28-29, we will receive a special offering. Enclosed in this newsletter is a special offering envelope. Please use it to give prayerfully and generously. We want to remain a congregation that has budget room to continue our support of Lutheran Social Services. If you can't be with us that weekend, please mail in your gift or bring it the next time you worship. Thank you!

Pastor Bruce Beyer

Who is Lutheran Social Services?

That answer is as diverse as the programs and people that make up our organization, and as unique as the people we serve each year. From a business perspective, LSS is the largest, non-profit agency of its kind in the two-state area bringing social services to nearly 100,000 people in 90 communities throughout Wisconsin and Upper Michigan. Our organization has an agency-wide office in Appleton, Eau Claire, Milwaukee, and Waukesha, and over 250 service sites offering a broad range of community and residential services.

These are impressive numbers for any business, but they're not the ones that really matter to us. Because LSS isn't about business. It's about caring for those in need and helping people who are hurting. As our mission states, "Motivated by the compassion of Christ, we help people improve the quality of their lives." Our values define our beliefs:

- **The infinite worth of each person** - Each person is a unique creation and child of God.
- **Diversity** - LSS values diversity in its staff and volunteers as well as in those it serves.
- **Interdependence** - Every individual and/or organization is interdependent with others.
- **Excellence** - Excellence is the standard of quality for all agency services and operations.
- **Innovation** - Ongoing change calls for creativity in developing and providing services.

At LSS, the meaningful numbers on our books are the 100,000 individuals of all faiths who look to us to meet their unique needs—be it a healing and helping hand or a place to call home. And the more than 2,500 LSS staff who are driven by a passion and Upper Michigan Lutherans in over 800 Church in America who own LSS and give us mission. And of course, the countless ELCA governments, corporations, foundations, and fund our social service ministry every day. Lutheran Social Services.

Serving Society's Needs

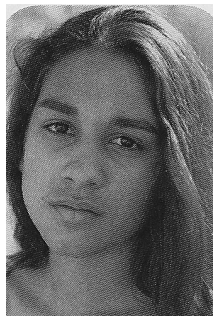
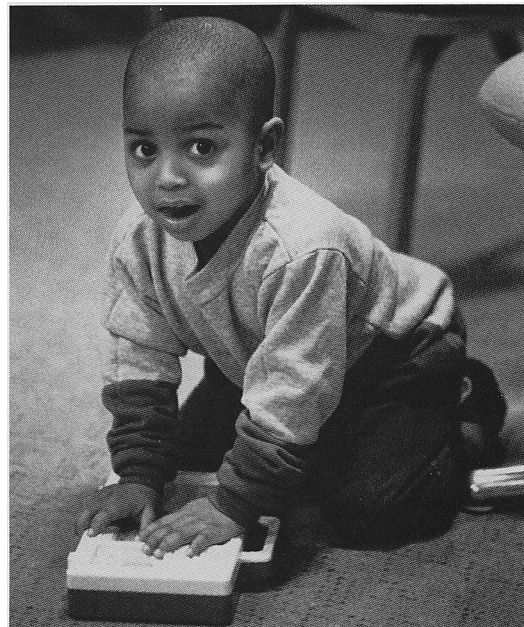
1882 when Pastor E.J. Homme opened a Wisconsin. Over 80 years later, in 1963,

providers, Martin Luther Social Services and Lutheran Welfare Society of Wisconsin, merged to form a single agency called Lutheran Welfare Services of Wisconsin, and Upper Michigan. In 1966, the present name, Lutheran Social Services of Wisconsin and Upper Michigan, was adopted.

Until about 40 years ago, our organization focused its efforts primarily on child welfare services and programs for single mothers. In the 1960s, contracts with state and local governments helped to broaden that focus to include help for all people in need, initiating a rapid expansion of new service offerings for the community.

Counseling emerged as a service line during the 1960's. In 1973, we opened our first group home, which served older children who required treatment foster care. In 1980, LSS initiated programs to assist persons with chronic mental illness. Services for those with developmental disabilities began in 1984, followed by a managed care program in 1992. The 1990s also saw an increased focus on international adoption, and the birth of an employee exchange program to help officials in the Russian Republic of Buryatia establish a basic system of human services. In 1997, LSS initiated the Family Partnerships Initiative in response to requests from rural communities. This innovative program is designed to creatively meet the needs of troubled adolescents and their families, and keep them intact. In 2001, LSS expanded its child welfare programs by accepting the State of Wisconsin's offer to manage Milwaukee County's nearly 3,000 foster homes.

Today, LSS programs continue to grow and adapt to meet the ever-changing needs of our society.



to serve. We value the 500,000 Wisconsin congregations of the Evangelical Lutheran the opportunity to pursue our important churches, United Ways, county and state thousands of individuals who support and These are the number that truly define

The origin of LSS can be traced back to home for orphaned children in Wittenberg, Homme Home, and two other social service

What's So Lutheran about Worship

"Praise the Lord! Sing to the Lord a new song, his praise in the assembly of the faithful! Psalm 149:1.

During this new century, as the church seeks a variety in worship formats, what insights does the Reformation give to us? Martin Luther, on the one hand, retained the order of liturgy that had served the church so well down through the centuries. On the other hand, he put the service into the language of the people and used popular folk tunes for his songs.

John Ylivsaker, best known for "Borning Cry," states in workshops he gives that Luther used a high/low approach in that there was a high level of formality for the festival days with the classical liturgy and a low approach with the folk mass for other times. Luther rejected the radical approach of the Anabaptists who would strip the service of anything that sounded like that of the classical liturgy. Luther emphasized a creative tension in being faithful to the order of worship of the historic ecumenical church and responsive to the times in which he found himself. The goal is to allow this genius of the Reformation to continue to guide and form our worship here today.

In addition, Ylivsaker offers historical insight on the subject of variety in worship. He tells of how in Story City, Iowa in 1900 there were three churches with three different worship styles. One (St. Petri) was the high church of the Norwegian Synod. Another (Bethel) was the low church that reflected the so-called Hauge tradition. Still another (Immanuel) was more of the middle way. In that day, people chose the church for, among other reasons, the style of worship. I am familiar with this community and these churches since I grew up in Story City and worshipped at Immanuel. Today, over a century later, he argues, people can worship in a variety of styles in their own congregation.

Here at First Lutheran, we are suggesting "Variety is the spice of life. Come to our **chapel** service on Saturday evening and meet old friends and make new ones. Come to our more formal **cathedral** early Sunday morning service to sing and hear great music that goes over the airwaves to our radio audience. Come to our more informal **camp** later Sunday morning service (starting after Labor Day) where a special message will be given for children. In addition various special emphasis services are offered to reflect the many aspects of the Christian life."

On the weekend of July 31-August 1, we will be using a heritage service as a part of the larger Barron 150th Anniversary, while on the weekend of August 7-8 we will be offering a hymn sing as a part of the worship. On August 14-15 we will offer another Service of Healing and Thanksgiving for Healing, and on August 21-22 we will offer a "Shared Ministry with Lutheran Social Services" emphasis.

Come to worship at First Lutheran!

Sincerely in Christ,
Pastor Lowell Bolstad

From the President's Corner:



We are over halfway through the summer. I hope all of you have had the chance to have some family time together, trips, etc. Excellent reports have come through to our council on Vacation Bible School. A real big thank you goes to Amanda Johnson and Sheila Erb and all the volunteers involved in that major project. Thank You!! Another thank you goes to the Worship and Music Committee involved in securing the balcony piano and the funds to pay for it. In regards to the call process, the Ministry Site Profile has been submitted. We are now waiting for the synod office to get back to the Council and the Call Committee. This process does not go as fast as some may like. With the Sesquicentennial now approaching, it may be toward the end of summer and into September before this Ministry Site Profile is acted upon. Be patient. You should have received a mailing on the multi-media campaign. Over half of the money has been raised for that project. Just a reminder that the full amount (\$30,000 approximately) needs to be raised before the project may begin. July 25 is our second "Special Mission Giving Sunday." Our third will occur August 29. Stay posted. Lastly, some of you may have keys to our church. We are still attempting to get a handle on who has them. If you haven't contacted the church office yet, please do so. Ladies, remember to wear your special hats on August 1st. See you at the "parade" and/or in church.

Keith Kolpack,
Church Council President



"Needle Nights" are on sabbatical until January 2011.

The Gift of Giving

We as Americans are so blessed to be living in this country. In your life and with your hands, God's amazing grace is accomplishing many things. If you look closely at the hands holding the page you are reading, you will discover they have the ability to do and have already done many things in the service of God's love. Please consider giving to our coming special projects. Your hands and generous giving are what bind this congregation together as a strong church and nation, and can make a difference.

A message from your Stewardship Committee

THE FOLLOWING ITEMS ARE NEEDED FOR MISSION KITS:

SCHOOL

80 boxes of crayons
104 scissors
34 erasers

HOSPICE

12 pick combs
20 nail clippers
3-3yds material
110 bars Ivory soap

HEALTH

32 bars bath size Ivory soap
32 pick combs
32 nail files
fabric projects

I thank every one that donates to these mission projects. It is greatly appreciated.

QUILTING WILL RESUME THURSDAY, SEPTEMBER 9, AT 1:00PM!!!

If you are willing to help take quilts to Rice Lake in October, please contact Marion Schmitz at 715-637-3964. Thank you.

Marion Schmitz



MALAWI: Enough to eat despite an uneven harvest

Despite some remaining pockets of food insecurity and fears that a prolonged dry spell would set back Malawi's maize production in 2010, the country looks set to realize another surplus year.

Alick Nkhoma, assistant representative in Malawi of the UN Food and Agriculture Organization (FAO), said all indications were that for the fifth consecutive year the country would produce enough maize, the staple food, even to support those in need in Southern Malawi, which experienced a dry spell.

Nkhoma pointed out that "Just like ... last year, good rains and a fertilizer subsidy program helped to boost maize production. Many households are food secure, except for those in districts that experienced the dry spell."

"In the rural areas of Lilongwe [district] most households managed to get coupons, with which they bought the subsidized fertilizers; the rains too were good in most areas - this is the reason there is enough maize here," vendor Thomson Mwale told IRIN.

The outlook in southern Malawi is not as rosy. A Famine Early Warning Systems Network (FEWSNET) report noted that as many as half a million people in the Lower Shire Valley in southern Malawi had not harvested any maize and needed immediate humanitarian support, but "the government has enough stocks to meet these needs".

"However, while food production is expected to remain favorable between April and June, total production is likely to be reduced in 2010 in the [southern] districts of Mwanza, Neno, Chikhwawa, Nsanje, Mulanje, Phalombe, Balaka and Ntcheu," FEWSNET reported.

WOMEN OF FAITH

Get away with your girlfriends to laugh, cry, and recharge!

WOMEN OF FAITH
over the top

The Barron Area Women of Faith are planning a delegation to the Women of Faith Conference in St. Paul, MN on October 22-23. The \$150 cost includes entry ticket, transportation, hotel and all meals!. For more information, contact Michelle Davis, group leader @ 715.931.8580 or barronareawof@gmail.com.

Come to worship

"I was glad when they said unto me, let us go up to the house of the Lord." Psalm 122:1

Cupboard and Closet

Pasta is the featured staple at the Cupboard during the month of August. However, the following are always in demand: Spaghetti Sauce, Instant Rice, Cereal, Peanut Butter, Soup, Canned Vegetables. Please consider buying a few extra items when you shop for your family and donate them to the Cupboard. On Tuesday, August 4, at 9am, there will be a meeting for the Food Pantry volunteers.

THANK YOU for your donations and support.

God is doing a great work through all of us.

Here is another great recipe from The Betty Crocker® Kitchens



- 24 uncooked jumbo pasta shells
- 1 lb lean (at least 80%) ground beef
- 1 jar (26oz) chunky tomato pasta sauce
- 1/4 cup water
- 1 container (8oz) chive and onion cream cheese spread
- 1 1/2 cups shredded 6 cheese Italian cheese blend (6oz)
- 1/2 cup grated parmesan cheese
- 1 egg
- 1-2 tablespoons chopped fresh parsley, if desired

1. Heat oven to 350 degrees. Cook and drain pasta shells as directed on package.
2. In 10-inch skillet, cook ground beef over medium high heat 5-7 minutes, stirring occasionally, until thoroughly cooked; drain. Cool slightly, about 5 minutes.
3. In a large bowl, mix pasta sauce and water. Pour 1 cup of the pasta sauce mixture in bottom of ungreased 13x9-inch (3-quart) glass baking dish. In medium bowl, mix cheese spread, 1 cup of the Italian cheese, the Parmesan cheese, egg and cooked ground beef. Spoon heaping tablespoon mixture into each shell. Arrange stuffed shells over sauce in baking dish. Pour remaining sauce over top, covering shells completely. Cover with foil.
4. Bake 40—45 minutes or until bubbly and cheese filling is set. Sprinkle with remaining 1/2 cup Italian cheese. Bake 10 minutes longer or until cheese is melted. Sprinkle with parsley.

Make the most of this recipe with tips from The Betty Crocker® Kitchens

For best results, cook the pasta shells just until al dente (still slightly firm). They are easier to stuff, and they won't be overcooked during baking.

If you can't find chive and onion cream cheese spread, just stir 1 tablespoon of each, finely chopped, into plain cream cheese spread.



Enjoy the remaining lazy days of summer and enjoy a book from our church library! We have light reading for all ages! Come in and check out a book today!

AFTERNOON FELLOWSHIP WILL MEET AT 10AM, WEDNESDAY, AUGUST 4!



Worship Volunteers

If you would like to help in any of these areas, please call the church office at 537-3575.

USHERS

July 31 and Aug 1
5:30 Joe Johnson
9:00 Gary Steglich

August 7 and 8
5:30 Joe Johnson
9:00 Gary Steglich

August 14 and 15
5:30 Joe Johnson
9:00 Gary Steglich

August 21 and 22
5:30 Joe Johnson
9:00 Gary Steglich

August 28 and 29
5:30 Joe Johnson
9:00 Gary Steglich

GREETERS

July 31 and Aug 1
5:30
9:00

August 7 and 8
5:30
9:00

August 14 and 15
5:30
9:00

August 21 and 22
5:30
9:00

August 28 and 29
5:30
9:00

LECTORS

July 31 and Aug 1
5:30 Andrew Harrington
9:00

August 7 and 8
5:30 Bonnie Burke
9:00

August 14 and 15
5:30 Dave Martinson
9:00

August 21 and 22
5:30 Russell Knutson
9:00

August 28 and 29
5:30 Sally Ellison
9:00

ALTAR GUILD

*Leader

July 31 and Aug 1
*Cheryl Johnson
Dixie Bjurstrom
Gail Larson

August 7 and 8
*Cheryl Johnson
Dixie Bjurstrom
Gail Larson

August 14 and 15
*Cheryl Johnson
Dixie Bjurstrom
Gail Larson

August 21 and 22
**Cheryl Johnson
Dixie Bjurstrom
Gail Larson

August 28 and 29
*Cheryl Johnson
Dixie Bjurstrom
Gail Larson

PIANISTS/ORGANISTS

July 31 and Aug 1
Ruth Anderson,
Organist

August 7 and 8
Ruth Anderson,
Organist

August 14 and 15
Ruth Anderson,
Organist

August 21 and 22
Roger Jones,
Pianist

August 28 and 29
June Edson,
Organist

ACOLYTES


August 1 Mason Kobarg
August 8
August 15 Austin Schake
August 22 Sara Williams
August 29 Mason Kobarg

COFFEE SERVICE

August 1 Lloyd Campbell
August 8 Carla and Rod Nordby
August 15
August 22 June and Jack Edson
August 29 Linda and Dave Martinson

FIRST LUTHERAN CHURCH

4 W. LaSalle Ave. , Barron, WI 54812 • Phone: 715-537-3575 www.firstlutheran-barron.org
 e-mail: office@firstlutheran-barron.org The 9:00am service is broadcast live over radio station 1090 AM. Telephone Ministry for all services: 837-4122

Sunday	Monday	Tuesday	Wednesday	Thursday	Friday	Saturday	
1 9:00a Worship with Holy Communion	2	3 9:30a AA Meeting 6:30p Jail Ministry 8p AA Meeting	4 10:00a Afternoon Fellowship 1:30p Women of the ELCA Meeting	5 9:30a AA Meeting 3:30p Bulletins Assembled	6	7 9:30a AA Meeting 5:30p Worship with Holy Communion	
8 9:00a Worship	9 7p Most Committees Meet	10 9a Food Pantry Volunteers 9:30a AA Meeting 6:30p Jail Ministry 8p AA Meeting	11	12 9:30a AA Meeting 3:30p Bulletins Assembled	13	14 9:30a AA Meeting 5:30p Worship with Holy Communion	
15 9:00a Worship with Holy Communion	16 7p Council	17 9:30a AA Meeting 6:30p Jail Ministry 8p AA Meeting NEWLETTER ARTICLES DUE!	18	19 9:00a Library 9:30a AA Meeting 3:30p Bulletins Assembled	20	21 9:30a AA Meeting 5:30p Worship with Holy Communion	
22 9:00a Worship	23	24 9:30a AA Meeting 6:30p Jail Ministry 8p AA Meeting	25	26 9:30a AA Meeting 3:30p Bulletins Assembled 5p Meal from the Heart	27 8:30a Assemble Newsletter	28 9:30a AA Meeting 5:30p Worship with Holy Communion	
29 9:00a Worship	30 12:30p Communion at Nursing Homes begins 6:30p BeFriends	31 9:30a AA Meeting 5p Confirmation Registration 6:30p Jail Ministry 8p AA Meeting					2010



July 19, 2010

Greetings Luther Park Congregations!

We want to invite you and members of your congregation to participate in our strategic planning as we plan for your camp's future! There has been much work done already and NOW is the time for you to share your hopes and dreams for the future of Luther Park!

Luther Park Strategic Planning

Saturday, August 7, starting at 10am at Luther Park!

Our initial strategic planning session will begin with a brief introduction of the work that has taken place so far and how the process will evolve. Then Terry Gilbertson will facilitate the discussion as we determine "what we want Luther Park to look like and be for YOU" in the coming years.

The day will begin at 10am, break for lunch and continue until about 2pm; however, we will plan on staying until we have heard all your thoughts, desires, wishes, and dreams for Luther Park. As we close in the afternoon, we will also be seeking volunteers for the various task teams and to continue putting "the plan" into action! This process is only an initial step in setting a course of action for Luther Park. Be thinking ahead, "What do you want your Bible Camp to look like in 2015?"

We are seeking constituent input and feedback as we set long range goals for the direction of Luther Park. Each congregation is strongly encouraged to bring at least 3 people including clergy, youth directors, lay leadership and interested members of your congregations!

All are welcome! *RSVP's at 715-859-2215 or Diana@LutherPark.org are appreciated to allow us to plan for lunch!*

From your Luther Park Board of Directors: Tom Wagener, Mike Wollman, Steve Kolden, Leila Haight, Brenda Thalacker, Chris Kamrath, Amanda Rasner, Rev. Ben Ahles-Iverson, Don Moats, Bill Jensen, Rev. Jim Page and Dale Kringle

As of June 29, there are 609 campers registered to attend camp in Summer 2010. This is 116 campers less than 2009 and 207 campers less than 2008. This means significantly less campers will have the opportunity to explore their faith and build relationships with counselors and other campers in a Christ-centered environment. Please consider how you, your congregation, or your family can encourage a week at Luther Park to youth and families you know. Luther Park will not turn anyone away regardless of their ability to pay. Download a campership request form at www.LutherPark.org. To register for any program, visit www.LutherPark.org or call Diana at 715-859-2215.

PREPARE THE WAY OF THE LORD

Email: lutherpark@lutherpark.org Website: <http://www.lutherpark.org>

Duties this month:

Mission Correspondence:

Communion Assistants:

Kitchen Maintenance:

Care of Altar:

Pledge Circle

Harmony Circle

Carla Nordby and Debra Olson

*Cheryl Johnson, Dixie Bjurstrom, Gail Larson

*Leaders, please contact pastors prior to your month to serve.



Luther Park’s Heart for the Park, Sunday, August 15

“That Christ may dwell in your hearts through faith, as you are being rooted and grounded in love.” *Ephesians 3:17*

This month’s feature of Heart for the Park—NEW Silent Auction!! An exciting aspect of Heart for the Park this year will be a Silent Auction featuring handcrafted items such as baby blankets, knitted and crocheted items, and theme baskets. A great idea for a youth group or Bible study group to put together and donate---ideas of theme baskets include sports theme baskets with game tickets, hobbyist baskets (fishermen, scrap bookers, or quilters, etc), and anything else you can think of! Any donations for the Silent Auction would be appreciated.

And course, don’t forget about the craft and quilt auction. We are looking for donations of handmade artisan crafts such wood crafted items, pottery, and artwork as well as quilts. Consider using your talents to benefit Luther Park.

Mark your calendars and join us on August 15! For more information, contact Diana at 715-859-2215 or Diana@LutherPark.org or Becky at Becky@LutherPark.org.

2010-2011 Recharge Schedule Announced
Oct 22-23, 2010: 3rd-6th Grade Recharge
Nov 5-6, 2010: Junior High Recharge
Jan 7-8, 2011: Junior High Recharge
Mar 11-12, 2011: Senior High Recharge

Come Retreat with us at Luther Park

It’s not too early to plan your fall or winter retreat at Luther Park! Some weekends are filling, so call and make your reservation today!

There are also many openings throughout the summer including:

Covenant Center: Many weekend openings throughout the summer.

Shalom Center: Several weekend openings throughout the summer.

Cabins are available most weekends.

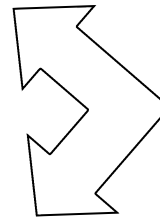
Contact Becky at 715-859-2215 or Becky@LutherPark.org for more information.



Some of God’s work will be in our hands when, on August 4, at 1:30pm, we will be at the Women of the ELCA meeting preparing kits for LWR shipment to foreign countries for our brothers and sisters in Christ, in many far-away places. You are encouraged to come and participate in this “at home” mission work. Doesn’t it sound exciting? Hope to see you there!

- R**estful
- E**xciting
- T**opnotch speakers and program
- R**elaxing
- E**nergizing
- A**ugust 16 and 17

Time = 3pm Monday —3pm Tuesday



*It’s not too late!
Register soon! Call
Judy Amundson at
715-637-3551 for
more information
regarding the retreat!*

At the annual Women of the ELCA meeting on Wednesday, September 1, at 1:30pm, we will be electing officers to guide us through 2011. If you have an interest in holding an office on the executive board, you may volunteer to have your name placed on the ballot. Or, one day soon, you may receive a phone call from a member of the nominating committee. If you’re interested or have any questions, just call Judy at 715-637-3551.

A quote from Bishop Duane Pederson as printed in the July Focus—as disciples

“We are walking together for the sake of mission in God’s world.”

Judy Amundson
Women of the ELCA President

**Minutes of the Congregational Council
First Lutheran Church
June 21, 2010**

Members Present: Andrew Harrington, Pastor Lowell Bolstad, Keith Kolpack, Pastor Bruce Beyer, Wendell McDonough, Gayle Larson, Jean Wick, Rod Wieneri, Carolyn Verhulst, Nancy Krahenbuhl, Carla Nordby, Julie Malone, Julie Hallberg

Members Excused: Barb Swant, Judy Amundson, Gerald Johnson, Carrie Amundson, Laretta Peterson

Meeting Call to Order: 7:05pm by Council President, Keith Kolpack

Devotions: Keith Kolpack

Secretary's Report: Motion to approve secretary's report as printed by Nancy Krahenbuhl. Second by Carolyn Verhulst. Motion carried.

Treasurer's Report: Rod Wieneri presented the finance report. General offerings for the month of May: \$23, 270.00 representing 84% of budget. YTD offering: \$110,946.00 representing 86% of budget. We would like to be at 90%. Last month's member loan request for payout has been repaid. A new member loan in the amount of \$25,000.00 has been made available. A motion was made by Rod Wieneri to acknowledge by council authority to bind First Lutheran Church to a new member loan in the amount of \$25,000.00. Second by Wendell McDonough. Motion carried.

Old Business:

- Elevator Study update – still exploring options for the lift, sizes. etc.
- Multi-Media update – mailing is ready to go but not sure when it may go out.
- Call Committee update – Commitments have been made to serve on the Call Committee by: Jeremy Miller, Terry Miller, Rod Nordby, Bill Koser, Nancy Krahenbuhl, Ann Knutson, and Kaitlyn Hanson. Motion to approve Call Committee by Wendell McDonough. Second by Andrew Harrington. Motion carried.
- Keys – still need some office keys identified.
- Synod Assembly results – no big issues this year, speaker was fabulous!

New Business:

- July 17 & 18 Special Mission Sunday, speaker will be Assistant to the Bishop, Pastor Todd Iverson
- Strawberry Sunday is July 18th

Committee Reports:

- Outreach – 15 baskets delivered to new community members.

Trust Fund Transfers: none

Pastor Beyer's Report:

- Transfers out – Kelly Jo Musil to Bethany Lutheran Church, Rice Lake. Christina Saffert and children, Savannah, Charlotte, George Henry and Quenton Anthony to Faith Lutheran, Cameron. A motion to approve the transfers of Kelly Jo Musil, Christina Saffert and children was made by Carolyn Verhulst. Second by Gayle Larson. Motion carried.
- Service of Healing was received well by members and will be offered on a quarterly basis.

Pastor Bolstad's Report:

- Regular Pastoral Worship – Special Services held Memorial Day, Service of Healing, Gospel Service, Father's Day. Looking ahead: Heritage Service/August 1st; October Worship Fest/Lenore Berg coordinating, brats and root beer as a fundraiser (Women of Faith); Jazz Service/John Kirk

- Transitional Ministry – A little multi-media technology will be introduced June 27th. This will be a casual service with the Vacation Bible School children. They will share their week of study and song with the congregation.
- Time is going very fast!

President’s Report: Still trying to fill some committee vacancies.

Vice President’s Report: none

Other Business: none

Adjourn: 7:59 PM Motion to adjourn meeting by Gayle Larson. Second by Carolyn Verhulst. Motion carried.

Closed with Lord’s Prayer.

Being called by God through Baptism and strengthened by the Word and Sacrament of our Lord’s Table, God guides First Lutheran Church to teach, preach, live and spread the Word of God.



There are several dates available for the 2010-2011 radio broadcast calendar. If you are interested in sponsoring any of the following dates, please contact the church office or fill out the information below:

2010: October 31

2011: January 2; March 13, 27; April 17; May 1

You do not need to pay right now to reserve a radio broadcast date; each radio broadcast costs \$75 and should be paid by the day of the broadcast. To reserve one of the remaining dates, simply complete the form below, drop it into the collection plate or mail the completed form to the church office at 4 W LaSalle Avenue, Barron, WI 54812. Thank you for supporting this important ministry!

I/We would like to sponsor Sunday, _____

Another acceptable date: Sunday, _____

Please indicate how the announcement should be worded
(i.e. given in memory of John Smith by Paul and Alice Smith)

Your Name: _____

Address: _____

City/State/Zip: _____

Phone #: _____



August

Birthday Blessings

Brittney Heilman	8/1
Laura Geiger	8/1
Kristine Lindstedt	8/1
Jayden Meyer	8/1
Phoebe Jerome	8/2
Grant Stabenow	8/2
Alesha Toews	8/2
John Schalley	8/2
Lila Sandve	8/2
Bruce Stumo	8/2
Janet Heil	8/2
Linda Feidt	8/2
Laurie Frandsen	8/3
Elizabeth Stephens	8/4
Kelly Burke	8/4
Ben Bolopue	8/4
Kim Otto	8/4
Carol Ormson	8/4
Char Chermack	8/4
Aryn Lipke	8/4
Lestat Olson	8/5
Justin Misunas	8/5
Don Ellefson	8/5
Jada Horstman	8/6
Joel Sinclair	8/7
Cole Bates	8/7
Gary Steglich	8/7
Alex Legore	8/7
Danielle Tireman	8/7
Paul Amundson	8/8
Karissa Rohde	8/8
Kayla Stoeklen	8/8
Carl Halvorson	8/8
Priscilla Hornung	8/9
Darlene Blihovde	8/9
Violet Sanders	8/9
Jeffrey Church	8/9
Judy Shaide	8/9
Kristine Mandel	8/10
Randy Jenness	8/10
David Marvin	8/10

Callie Hilbert	8/10
Summer Thorp	8/11
Robert Missling	8/11
Kayla Rundhaug	8/11
Jessica Colman	8/11
Kyle Nordby	8/11
Duane Ormson	8/12
Angela Johnson	8/12
Keith Kolpack	8/13
Chris Jerome	8/14
Ann Berg	8/14
Brett Gevens	8/14
Rosemarie Wold	8/15
Keith Bolster	8/15
Edwin Berg	8/15
Lynn Haugen	8/15
Andrew Sloan	8/15
Nancy Thompson	8/15
Brandy L'Heureux	8/15
Ken Peterson	8/16
Abigail Lundequam	8/16
Tyler Landsworth	8/17
Peggy Rogers	8/17
Ashley Ostenson	8/17
Paul Martinson	8/17
William Bates	8/17
Tanner Rohde	8/18
Kevin Herrman	8/18
Dominique Anderson	8/19
Brandon Balts	8/19
Patricia Watkins	8/19
Dane Picknell	8/20
Jacob Sinclair	8/20
Ashley Ellenbecker	8/20
Gail Larson	8/20
Sarah Herrman	8/20
William Koslofsky	8/21
Steven Hover	8/21
Maurice Smith	8/22
Debra Olsen	8/22
Krystal LaLiberty	8/22
Abigail Amundson	8/23
Gina Sookiayak	8/23
Darla Weinert	8/24
Dana Weinert	8/24
Phyllis Turgeson	8/24
Dean Springer	8/25

Andrew Harrington	8/25
Derrick Anderson	8/25
Paul Schultz	8/26
Pat Bjelland	8/26
Lynese Gulczynski	8/26
Mark Hilbert	8/27
Nichole Webert	8/27
Amanda Junkins	8/27
Kaely Ostenson	8/27
Aaron Williams	8/28
Lisa Avery	8/28
Nolan Stokes	8/28
Harper Peterson	8/28
Michael Otto	8/28
Craig Nevin	8/28
Paige Burdick	8/28
Francis Felber	8/28
Belva Floan	8/28
Robert Thummel	8/29
Robert Zappitello	8/29
Shayne Braden	8/29
Ethan Donica	8/30
William Martin	8/30
Bryce Jenness	8/30
Sharon Nelsen	8/30
Gary Ness	8/31
Matthew Matthys	8/31

Happy Birthday to Everyone!

Is your name missing from our July list? Is the date incorrect? Do you know of someone who should be on our list? If so, please call the church office (537-3575) so that we may update our records! Please note that any omissions are not intentional. Thank You for your help!

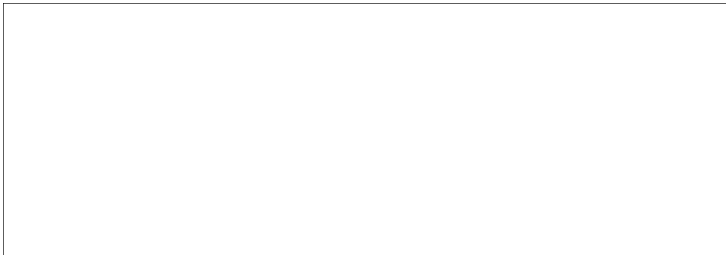


First Lutheran Church

4 W. LaSalle Ave.
Barron, WI 54812-1307

CHANGE SERVICE REQUESTED

Non profit Org.
U.S. Postage
Paid
Barron, WI 54812
Permit #45



First Lutheran Church
4 W. La Salle Ave. · Barron, WI 54812
Church Phone: 715-537-3575
Telephone Ministry: 715-837-4122
e-mail: office@firstlutheran-barron.org
www.firstlutheran-barron.org

**Summer Schedule:
(Memorial Day - Labor Day)
Saturday Worship,* 5:30 p.m.
Sunday Worship *9:00am**

Winter Schedule:
Saturday Worship,* 5:30 p.m.
Sunday Worship,* 8:30 & 10:45 a.m.
Sunday School, 9:40 a.m.

*Holy Communion,
each Saturday and 1st and 3rd Sunday

Pastors
Bruce Beyer Home: 537-3480
Lowell Bolstad Home: 637-3333

Parish Secretary
Tricia Lehner Church: 537-3575, Editor

Office Hours
Monday-Thursday 8:00-12:00 & 12:30-4:00
Friday 8:00-12:00

President Keith Kolpack
Vice-President Andrew Harrington
Treasurer Johnson, Agen, Kupferschmidt & Associates

Financial Secretary Mary McDonough
Choir Director David Midboe
Directors of Education Sheila Erb and Amanda Johnson

Custodians Ron & Brenda Kahl